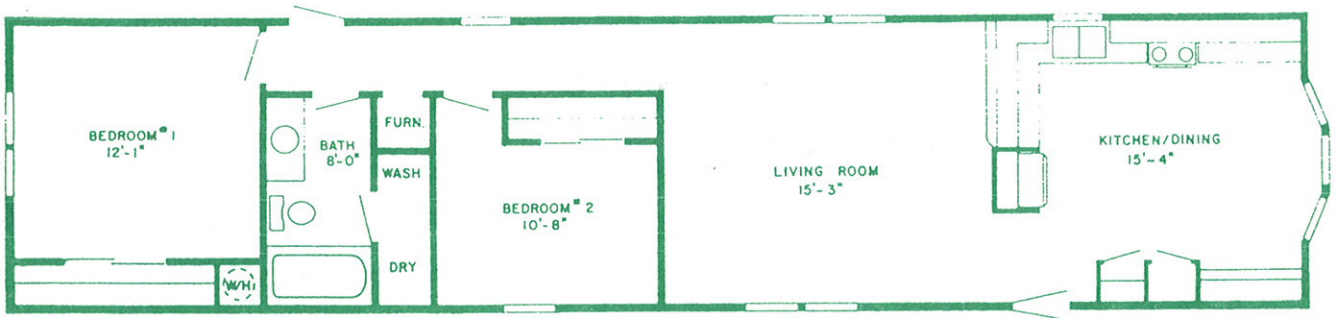


SHAMROCK HOMES



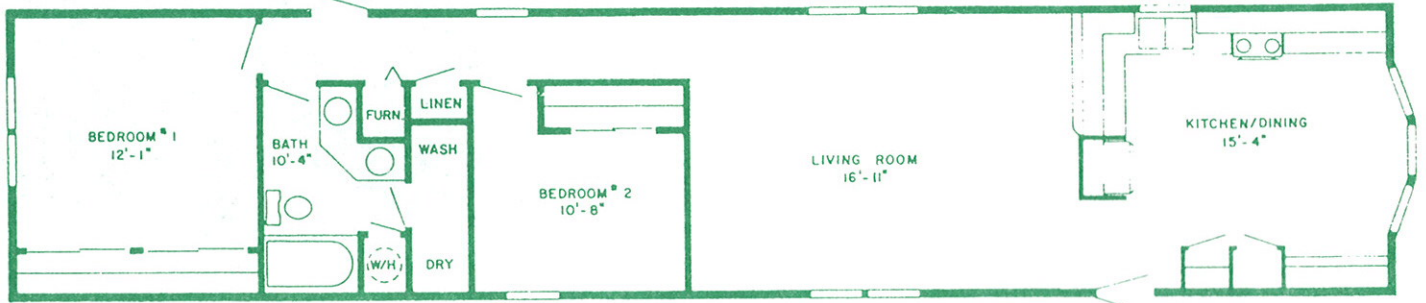
14' & 16' WIDE
HOME DESIGNS





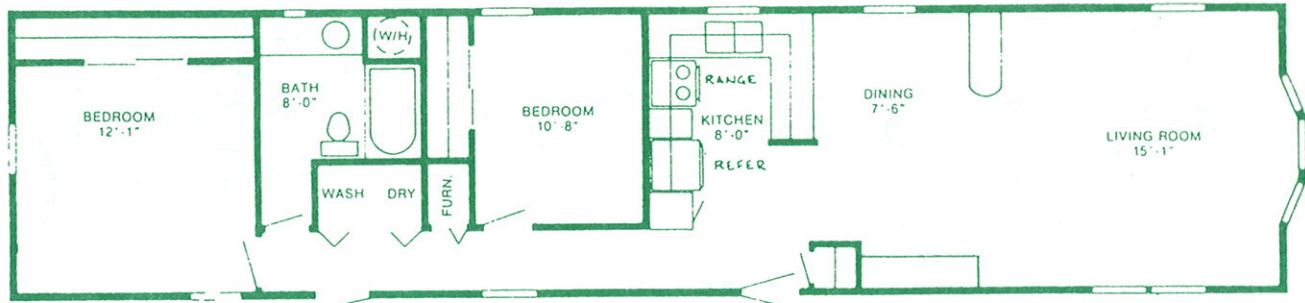
#89-01
65 x 14 Front Dining Room 2 Bedroom

Floor Size
14' - 13'9" x 61'4"
16' - 15' x 61'4"



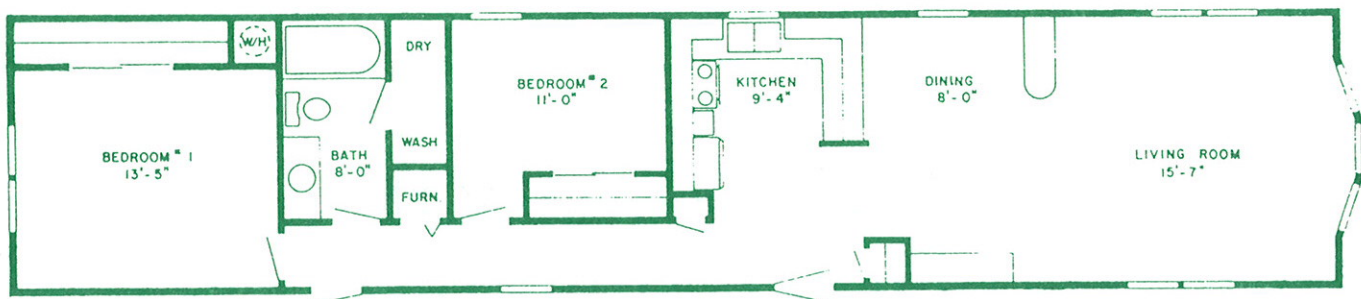
#89-02
70 x 14 Front Dining Room 2 Bedroom

Floor Size
14' - 13'9" x 65'4"
16' - 15' x 65'4"



#89-04
65 x 14 Front Living Room 2 Bedroom

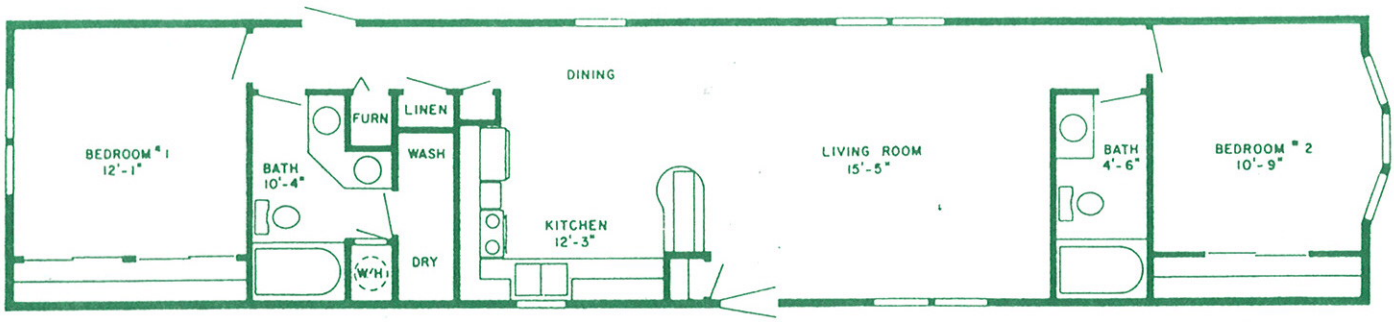
Floor Size
14' - 13'9" x 61'4"
16' - 15' x 61'4"



#89-10
70 x 14 Front Living Room 2 Bedroom

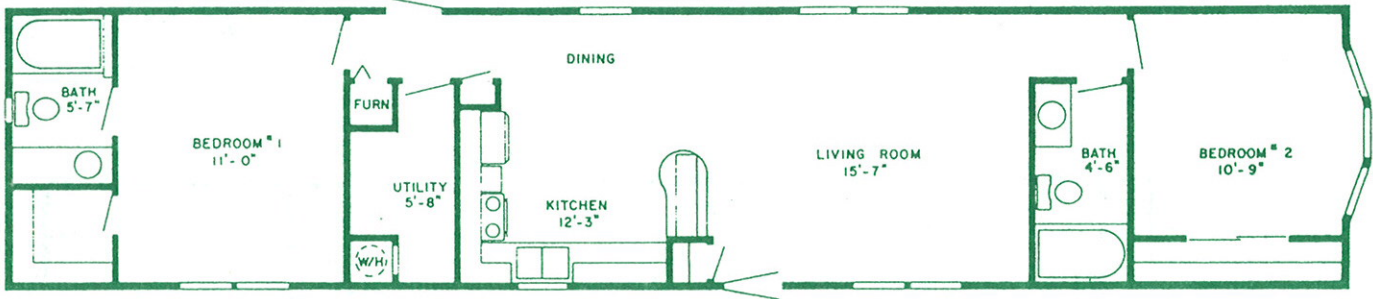
Floor Size
14' - 13'9" x 65'4"
16' - 15' x 65'4"





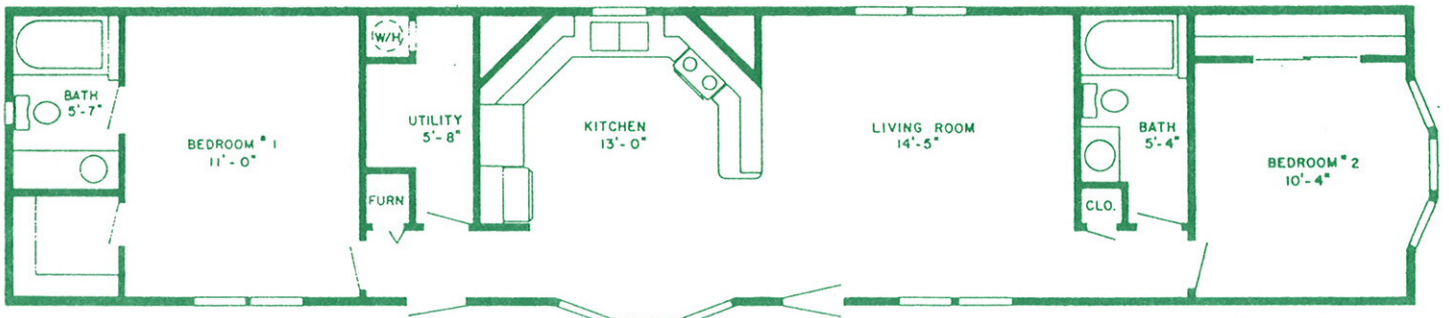
#89-13
70 x 14 Front and Rear 2 Bedroom 2 Bath

Floor Size
14' - 13'9" x 65'4"
16' - 15' x 65'4"



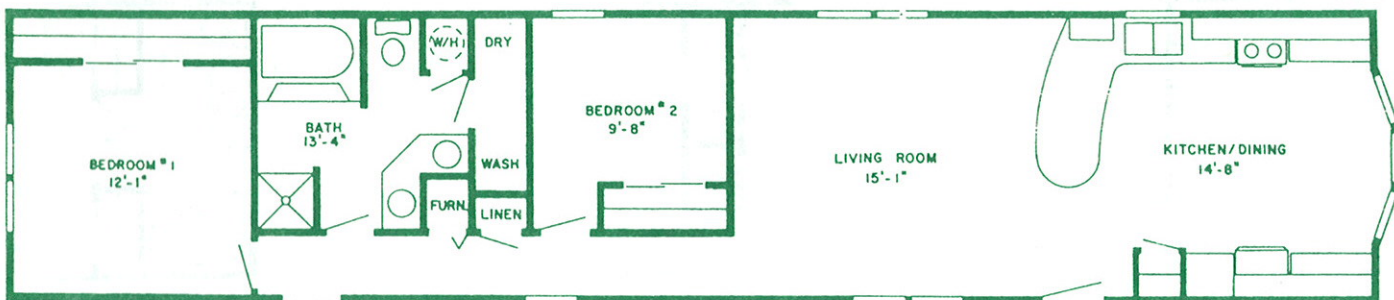
#89-14
70 x 14 Front and Rear 2 Bedroom R. Bath

Floor Size
14' - 13'9" x 65'4"
16' - 15' x 65'4"



#89-72
70 x 14 2 Bedroom 2 Bath Circle Kitchen

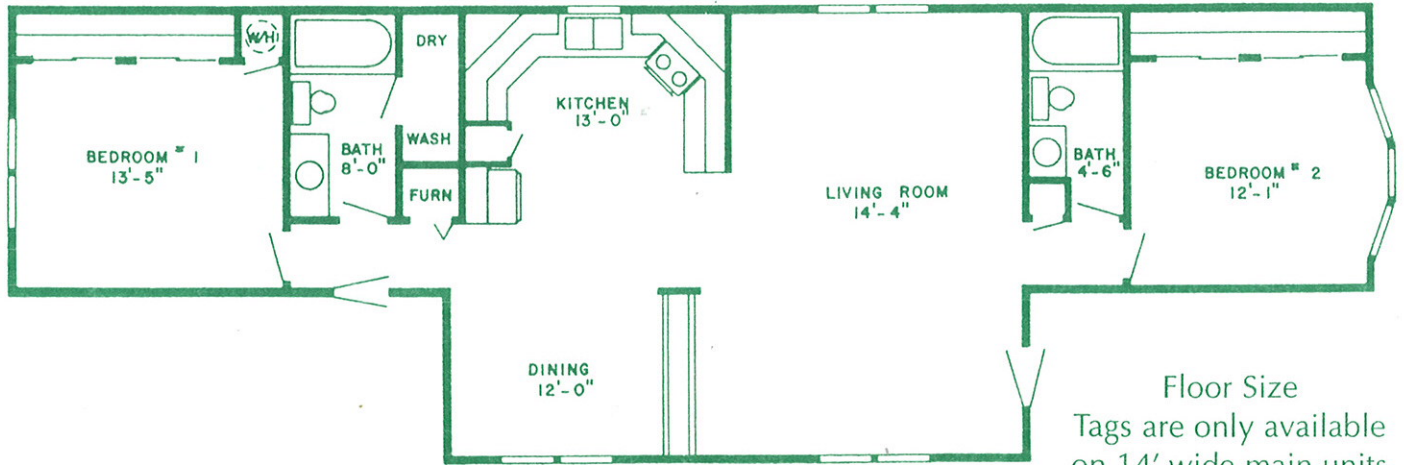
Floor Size
14' - 13'9" x 65'4"
16' - 15' x 65'4"



#89-80
70 x 14 Front Kitchen 2 Bedroom

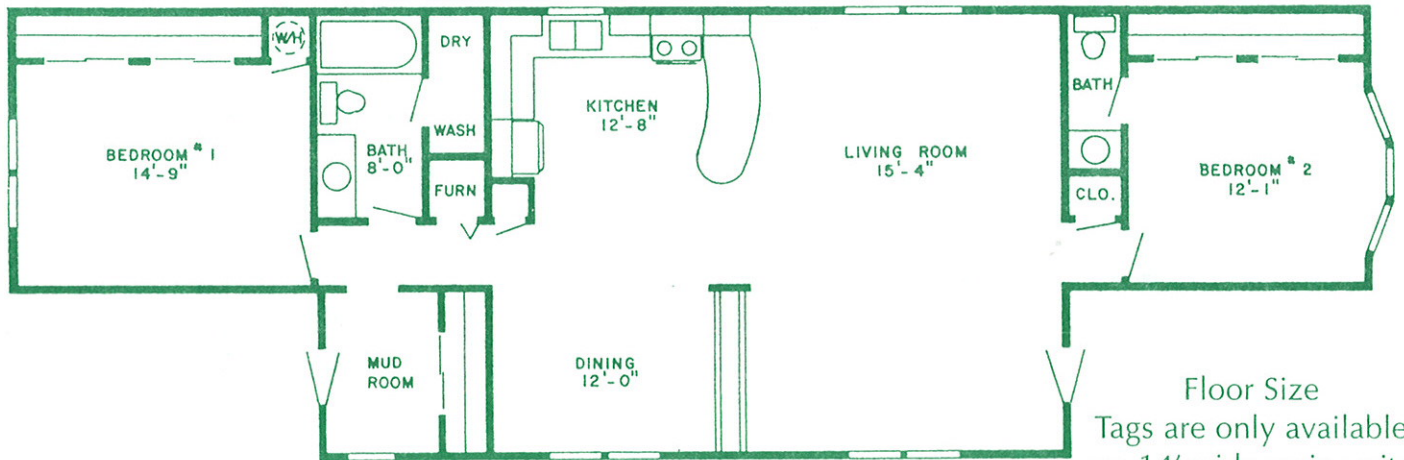
Floor Size
14' - 13'9" x 65'4"
16' - 15' x 65'4"





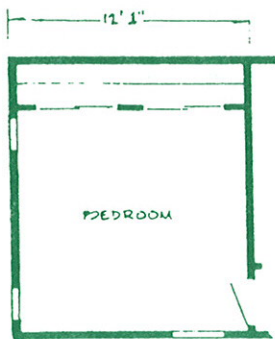
#89-90
70 x 14 F & R 2 Bedroom 2 Bath w/ 8 x 32 Tag

Floor Size
Tags are only available
on 14' wide main units
13'0" x 65'4" main unit
w/ 8'0" x 28'0" Tag



#89-91
70 x 14 F & R 2 Bedroom 1½ Bath CK w/ 8 x 40 Tag

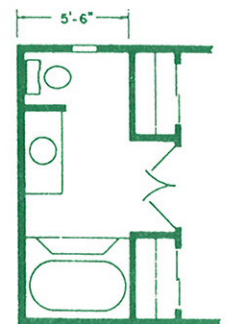
Floor Size
Tags are only available
on 14' wide main units
13'9" x 65'4" main unit
w/ 8'0" x 36'0" Tag



Master Bedroom
Opt. Continental Windows
Opt. His & Her Closet

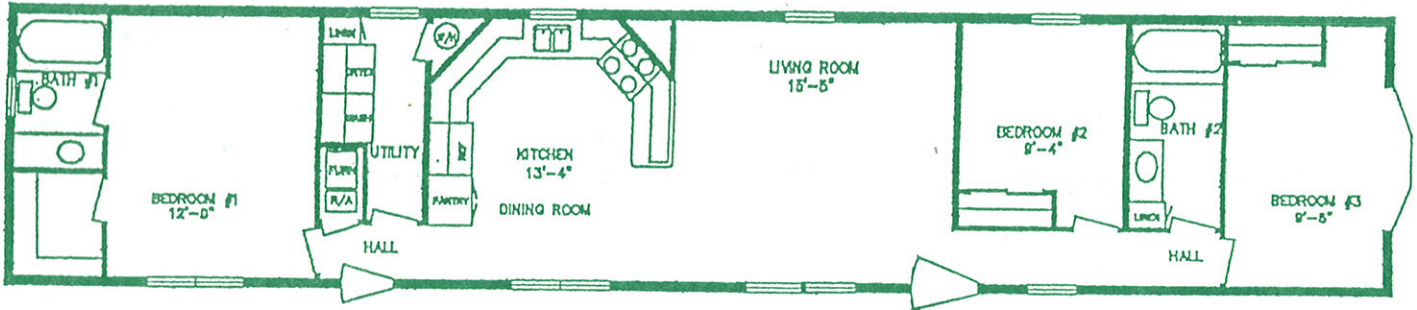


30" Bath
Optional Half Bath
Available in 3 BR Models



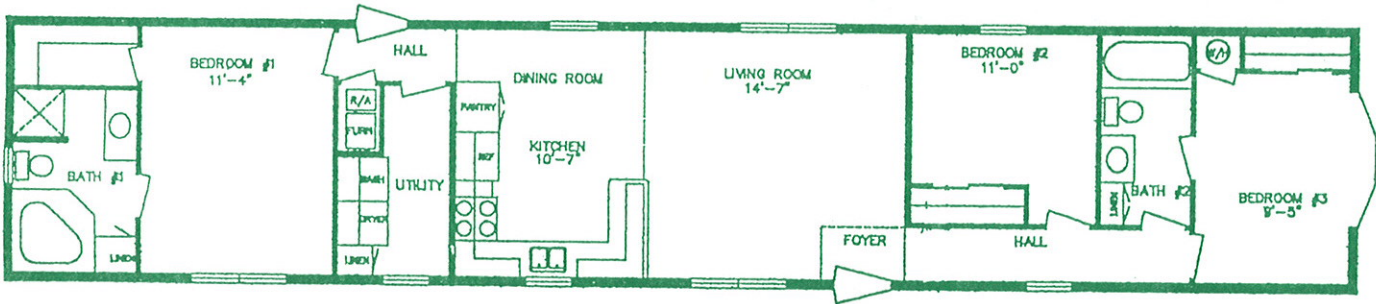
OPTIONAL REAR BATH
Regency Rear Bath
Optional w/Garden Tub
of 60" Residential Tub





#01-01
80 x 14 3 Bedroom Front & Rear 2 Bath

Floor Size
14' - 13'9" x 76'
16' - 15' x 76'



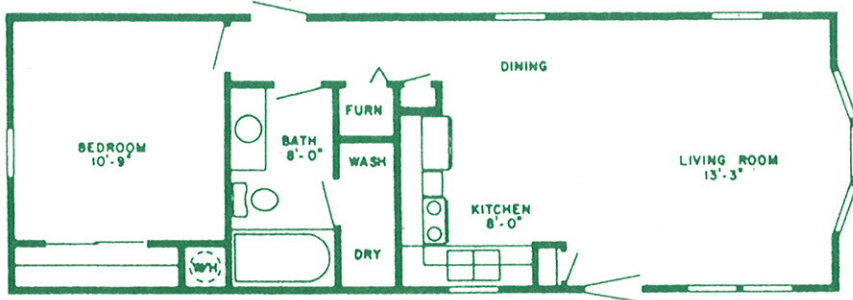
#01-02
80 x 14 3 Bedroom Front & Rear 2 Bath

Floor Size
14' - 13'9" x 76'
16' - 15' x 76'

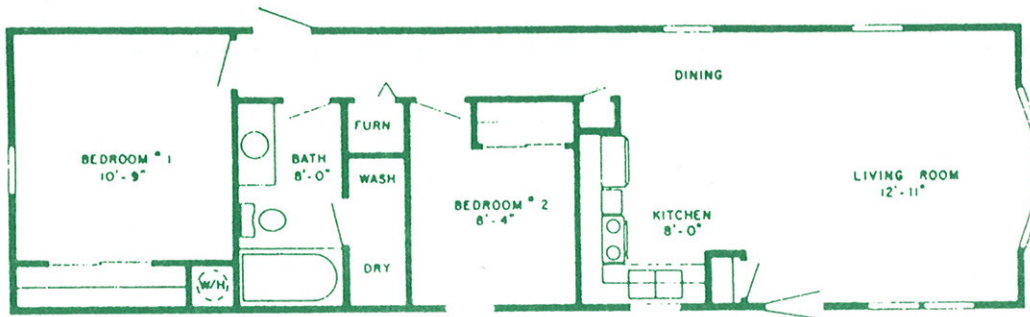




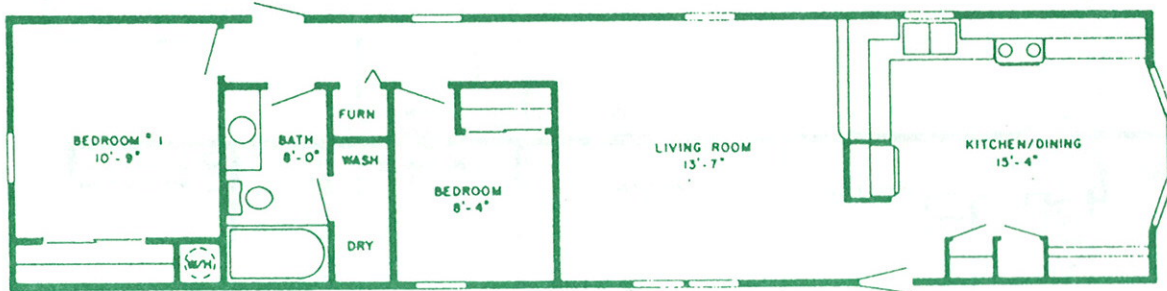
LEPRECHAUN SERIES



#89-25 - 44 x 14
 Front Living Room 1 Bedroom
 Floor Size
 14' - 13'9" x 40'0"
 16' - 15' x 40'0"

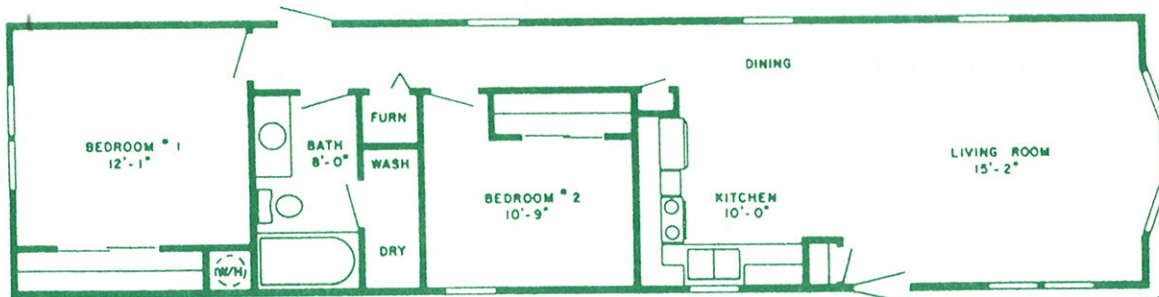


#89-282 - 52 x 14
 Front Living Room 2 Bedroom
 Floor Size
 14' - 13'9" x 48'0"
 16' - 15' x 48'0"



#89-24
 60 x 14 Front Dining Room 2 Bedroom

Floor Size
 14' - 13'9" x 56'0"
 16' - 15' x 56'0"



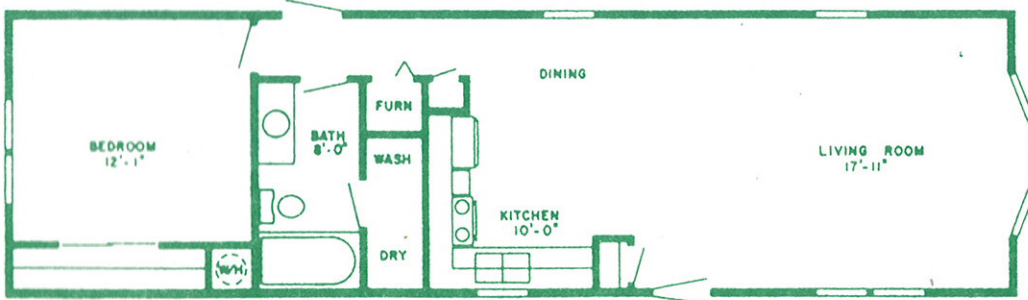
#89-26
 60 x 14 Front Living Room 2 Bedroom

Floor Size
 14' - 13'9" x 56'0"
 16' - 15' x 56'0"

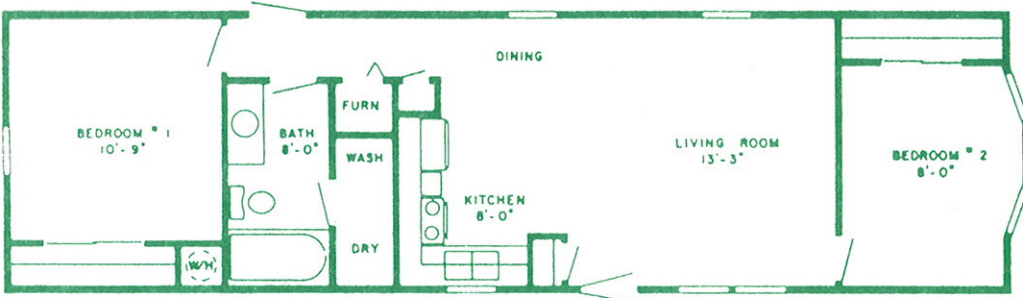




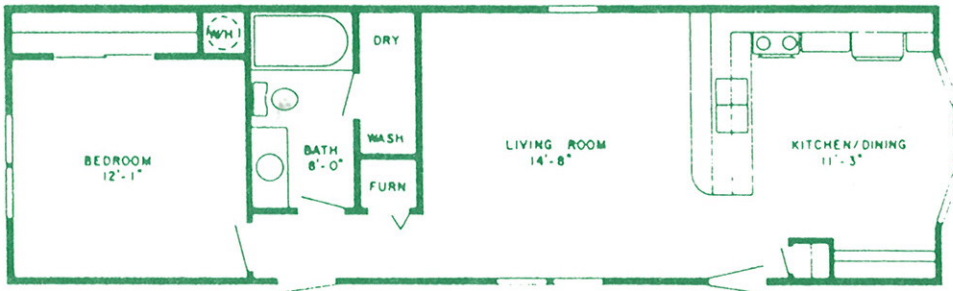
LEPRECHAUN SERIES



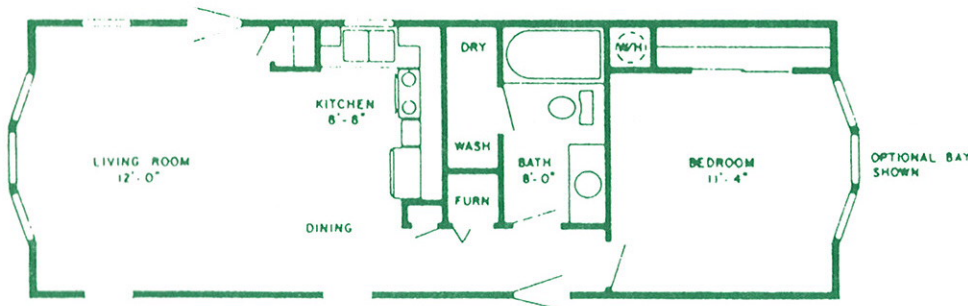
#89-28 - 52 x 14
Front Living Room 1 Bedroom
Floor Size
14' - 13'9" x 48'0"
16' - 15' x 48'0"



#89-29 - 52 x 14
Front Bedroom 2 Bedroom
Floor Size
14' - 13'9" x 48'0"
16' - 15' x 48'0"



#89-40 - 50 x 14
1 Bedroom Front Kitchen
Floor Size
14' - 13'9" x 45'4"
16' - 15' x 45'4"



#89-44 - 44 x 14
Front Bedroom
Optional Rear Bay
Floor Size
14' - 13'9" x 40'0"
16' - 15' x 40'0"



